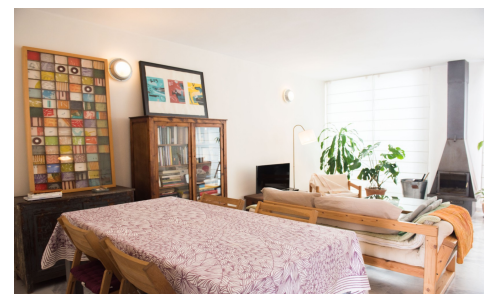




UP60857J

Semi Detached in Javea
€525,000


3



2


102m²


N/A



This lovely semi-detached townhouse is located in Javea Port, right across from the La Grava Beach. It's nestled between the sea offering a peaceful setting. The property is part of a calm neighbourhood with a pool. It has its own underground parking place and a storage room. The townhouse has two levels and a top-floor roof terrace with amazing views of the sea and the San Antonio Cape. The main living area is on the ground floor and includes a living-dining room with a fireplace and a separate kitchen. There's also a bathroom with a shower on this level. Upstairs, you'll find the sleeping area with three bedrooms:...(Ask for More Details!)